

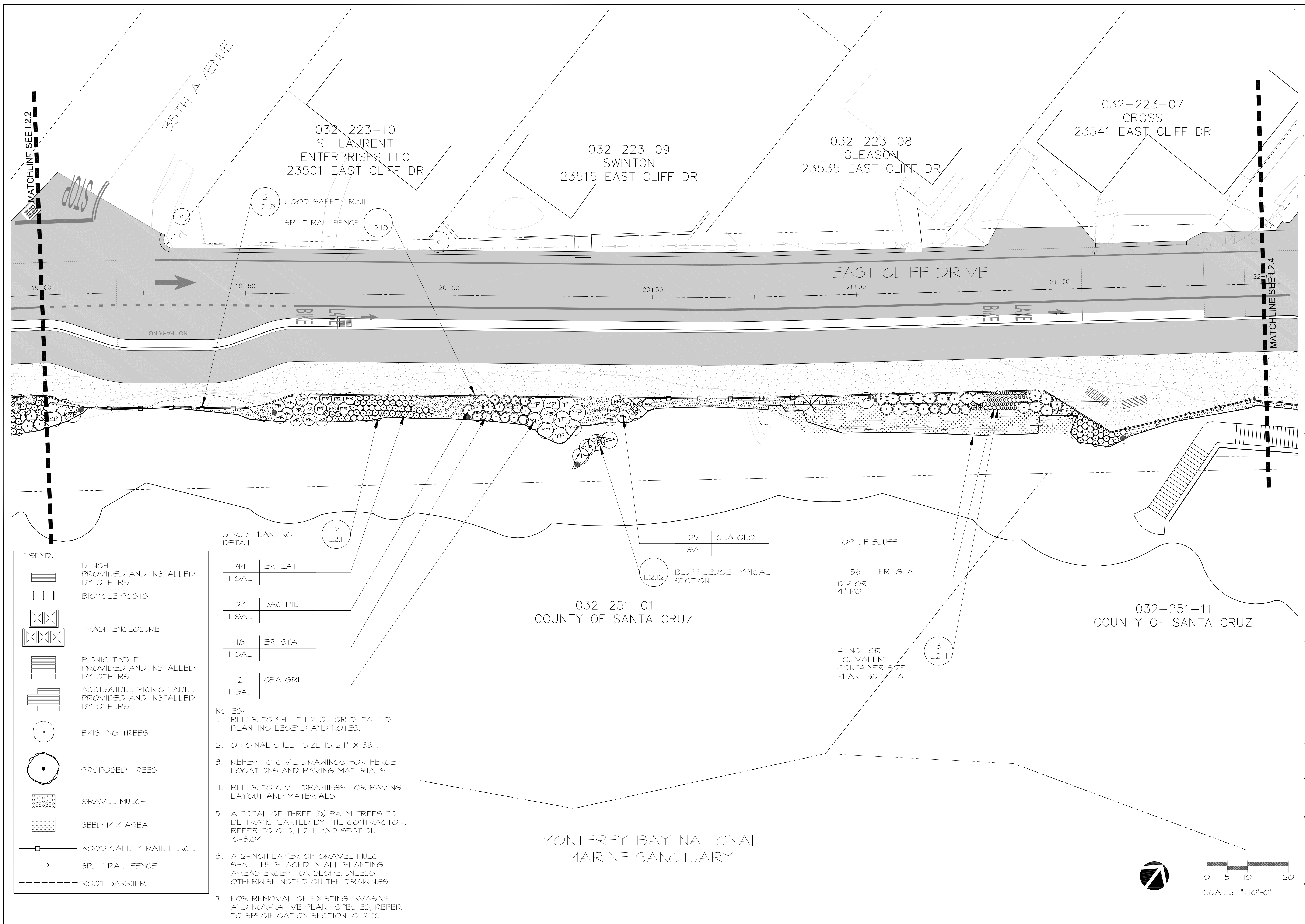


Santa Cruz County  
 Design Professional  
 701 Ocean St., Rm. 410  
 Santa Cruz, CA 95060-4000  
 Phone: (831) 454-2160  
 Fax: (831) 454-2385

**PLANTING PLAN**  
**EAST CLIFF DRIVE PARKWAY PROJECT**  
**32nd AVENUE TO 41st AVENUE**  
 County of Santa Cruz, California

REV	BY	DATE	DESCRIPTION
1	JLJ	03/22/10	75% SUBMITTAL
2	JLJ	10/08/10	95% SUBMITTAL
3	JLJ	01/12/11	BID SET

DATE: 01/12/2011  
 SCALE: 1"=10'-0"  
 DESIGNED BY: JLJ  
 DRAFTED BY: ED/MO  
 CHECKED BY: JLJ  
 JOB NO.: 08-150  
 FILE: 123 EAST CLIFF PARKWAY PLANTING PLAN.dwg



**LEGEND:**

- BENCH - PROVIDED AND INSTALLED BY OTHERS
- BICYCLE POSTS
- TRASH ENCLOSURE
- PICNIC TABLE - PROVIDED AND INSTALLED BY OTHERS
- ACCESSIBLE PICNIC TABLE - PROVIDED AND INSTALLED BY OTHERS
- EXISTING TREES
- PROPOSED TREES
- GRAVEL MULCH
- SEED MIX AREA
- WOOD SAFETY RAIL FENCE
- SPLIT RAIL FENCE
- ROOT BARRIER

**SHRUB PLANTING DETAIL**

94	ERI LAT	1 GAL
24	BAC PIL	1 GAL
18	ERI STA	1 GAL
21	CEA GRI	1 GAL

- NOTES:**
- REFER TO SHEET L2.10 FOR DETAILED PLANTING LEGEND AND NOTES.
  - ORIGINAL SHEET SIZE IS 24" X 36".
  - REFER TO CIVIL DRAWINGS FOR FENCE LOCATIONS AND PAVING MATERIALS.
  - REFER TO CIVIL DRAWINGS FOR PAVING LAYOUT AND MATERIALS.
  - A TOTAL OF THREE (3) PALM TREES TO BE TRANSPLANTED BY THE CONTRACTOR. REFER TO C.I.O., L2.II, AND SECTION 10-3.04.
  - A 2-INCH LAYER OF GRAVEL MULCH SHALL BE PLACED IN ALL PLANTING AREAS EXCEPT ON SLOPE, UNLESS OTHERWISE NOTED ON THE DRAWINGS.
  - FOR REMOVAL OF EXISTING INVASIVE AND NON-NATIVE PLANT SPECIES, REFER TO SPECIFICATION SECTION 10-2.13.

MONTEREY BAY NATIONAL MARINE SANCTUARY

